

# Clarke®



## ELECTRIC POWER FILE

MODEL NO: CPF13

PART NO: 6462062

## OPERATION & MAINTENANCE INSTRUCTIONS

UK  
PA | CE



ORIGINAL INSTRUCTIONS

DL0423 - REV 6

---

## INTRODUCTION

---

Thank you for purchasing this CLARKE Electric Power File.

Before attempting to use this product, please read this manual thoroughly and follow the instructions carefully. In doing so you will ensure the safety of yourself and that of others around you, and you can look forward to your purchase giving you long and satisfactory service.

---

## GUARANTEE

---

This product is guaranteed against faulty manufacture for a period of 12 months from the date of purchase. Please keep your receipt which will be required as proof of purchase.

This guarantee is invalid if the product is found to have been abused or tampered with in any way, or not used for the purpose for which it was intended.

Faulty goods should be returned to their place of purchase, no product can be returned to us without prior permission.

This guarantee does not effect your statutory rights.

---

## SPECIFICATIONS

---

Model Number	CPF13
Rated Voltage	230-240V~50Hz
Power Input	400 W
Belt Speed	300-1700m/min.
Sound Pressure Level LpA	80.2 dB(A), Uncertainty Factor (K) 3 dB(A)
Sound Power Level LWA	91.2 dB(A), Uncertainty Factor (K) 3 dB(A)
Weight	1.72 kg (unpacked)
Vibration	1.215 m/s <sup>2</sup> Uncertainty Factor 1.5
Dimensions (L x W x H)	385 mm x 172 mm x 95 mm

---

# POWER TOOL SAFETY WARNINGS

---

## WORK AREA

1. **Keep the work area clean and well lit.** Cluttered and dark areas invite accidents.
2. **Do not operate power tools in explosive atmospheres, such as in the presence of flammable liquids, gases or dust.** Power tools create sparks which may ignite the dust or fumes.
3. **Keep children and bystanders away while operating a power tool.** Distractions can cause you to lose control.

## ELECTRICAL SAFETY

1. **Power tool plugs must match the outlet. Never modify the plug in any way. Do not use adaptor plugs with earthed (grounded) power tools.** Unmodified plugs and matching outlets will reduce the risk of electric shock.
2. **Do not expose power tools to rain or wet conditions.** Water entering a power tool will increase the risk of electric shock.
3. **Do not abuse the cable. Never use it for carrying, pulling or unplugging the power tool. Keep the cable away from heat, oil, sharp edges or moving parts.** Damaged or entangled cables increase the risk of electric shock.
4. **When operating a power tool outdoors, use an extension cable suitable for outdoor use.** Use of a cable suitable for outdoor use reduces the risk of electric shock
5. **If operating the power tool in a damp location is unavoidable, use a residual current device (RCD) protected supply.**

## PERSONAL SAFETY

1. **Stay alert, watch what you are doing and use common sense when operating a power tool.** Do not use a power tool while you are tired or under the influence of drugs, alcohol or medication. A moment of inattention while operating power tools may result in personal injury.
2. **Use safety equipment. Always wear eye protection.** Safety equipment such as dust mask, non-skid safety shoes, hard hat, or hearing protection used for appropriate conditions will reduce personal injuries.
3. **Avoid accidental starting.** Ensure the switch is in the off position before plugging in. Carrying power tools with your finger on the switch or plugging in power tools that have the switch on invites accidents.
4. **Remove any wrench before turning the power tool on.** A wrench left attached to a rotating part may result in personal injury.
5. **Do not overreach.** Keep proper footing and balance at all times. This enables better control of the power tool in unexpected situations.
6. **Dress properly.** Do not wear loose clothing or jewellery. Keep your hair, clothing and gloves away from moving parts. Loose clothes, jewellery or long hair can be caught in moving parts.

## POWER TOOL USE AND CARE

1. **Do not force the power tool.** Use the correct accessories for your application. The correct power tool will do the job better and safer at the rate which it was designed for.
2. **Do not use the power tool if the switch does not turn it on and off.** Any power tool that cannot be controlled with the switch is dangerous and must be repaired.
3. **Disconnect the plug from the power source before changing accessories, or storing power tools.** Such preventive safety measures reduce the risk of starting the power tool accidentally.
4. **Store idle tools out of the reach of children and do not allow persons unfamiliar with the power tool or these instructions to operate it.** Power tools are dangerous in the hands of untrained users.
5. **Maintain power tools.** Check for misalignment or binding of moving parts, breakage of parts and any other condition that may affect the power tool's operation. If damaged, have the power tool repaired before use. Many accidents are caused by poorly maintained power tools.
6. **Use the power tool and accessories in accordance with these instructions and in the manner intended, taking into account the working conditions and the work to be performed.** Use of the power tool for operations different from intended could result in a hazardous situation.
7. The performance of this tool may vary, depending upon variations in line voltage. Extension cable usage may also affect performance.

## SERVICE

1. **Have your power tool serviced by qualified service personnel using only identical replacement parts.** This will ensure that the safety of the power tool is maintained.

---

## ADDITIONAL SAFETY WARNINGS FOR SANDERS

---

1. Hold the power tool by insulated gripping surfaces, because the sanding belt / sanding base may contact its own cord. Cutting a "live" wire may make exposed metal parts of the power tool "live" which could give the operator an electric shock.
2. Use clamps or another practical way to secure and support the workpiece to a stable platform. Holding the work by hand or against your body leaves it unstable and may lead to loss of control.
3. Warning! Contact with or inhalation of dust arising from sanding applications may endanger the health of the operator and possible bystanders. Wear a dust mask specifically designed for protection against dust and fumes and ensure that persons within or entering the work area are also protected.
4. Thoroughly remove all dust after sanding.
5. Take special care when sanding paint which is possibly lead based or when sanding some woods and metal which may produce toxic dust, -Do not let children or pregnant women enter the work area.

---

## EXPLANATION OF SYMBOLS & PICTOGRAMS

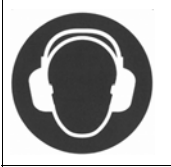
---



Read Instruction Manual Before Use.



Wear safety glasses or goggles when using the tool.



Wear ear protection when using this tool.



Always wear gloves when working with metal workpieces.



Wear a dust mask.

---

## ACCESSORIES

---

The following belts are available from your Clarke dealer.

DESCRIPTION	PART NUMBER
Pack of 5 120 Grit (fine) belts	6502360
Pack of 5 80 Grit (medium) belts	6502365
Pack of 5 60 Grit (coarse) belts	6502370

# ELECTRICAL CONNECTIONS



**WARNING: READ THESE ELECTRICAL SAFETY INSTRUCTIONS THOROUGHLY BEFORE CONNECTING THE PRODUCT TO THE MAINS SUPPLY.**

Before switching the product on, make sure that the voltage of your electricity supply is the same as that indicated on the rating plate. This product is designed to operate on 230VAC 50Hz. Connecting it to any other power source may cause damage.

This product may be fitted with a non-rewireable plug. If it is necessary to change the fuse in the plug, the fuse cover must be refitted. If the fuse cover becomes lost or damaged, the plug must not be used until a suitable replacement is obtained.

If the plug has to be changed because it is not suitable for your socket, or due to damage, it should be cut off and a replacement fitted, following the wiring instructions shown below. The old plug must be disposed of safely, as insertion into a mains socket could cause an electrical hazard.

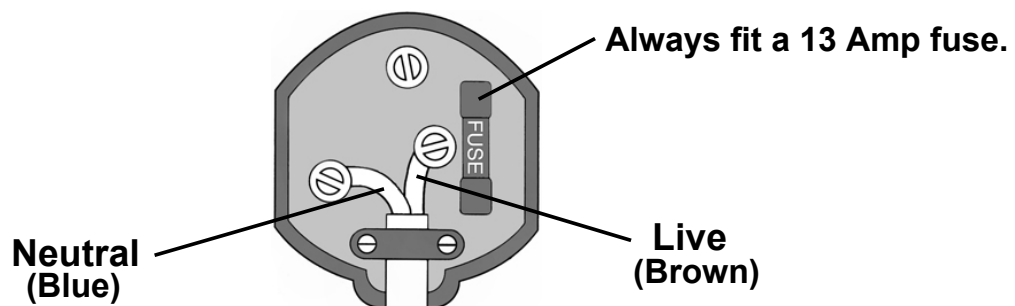


**WARNING: THE WIRES IN THE POWER CABLE OF THIS PRODUCT ARE COLOURED IN ACCORDANCE WITH THE FOLLOWING CODE:  
BLUE = NEUTRAL    BROWN = LIVE**

If the colours of the wires in the power cable of this product do not correspond with the markings on the terminals of your plug, proceed as follows.

- The **Blue** wire must be connected to the terminal marked **N** or coloured **Black**.
- The **Brown** wire must be connected to the terminal marked **L** or coloured **Red**.

**Plug must be BS1363/A approved.**



**Ensure that the outer sheath of the cable is firmly held by the clamp**

We strongly recommend that this machine is connected to the mains supply via a Residual Current Device (RCD)

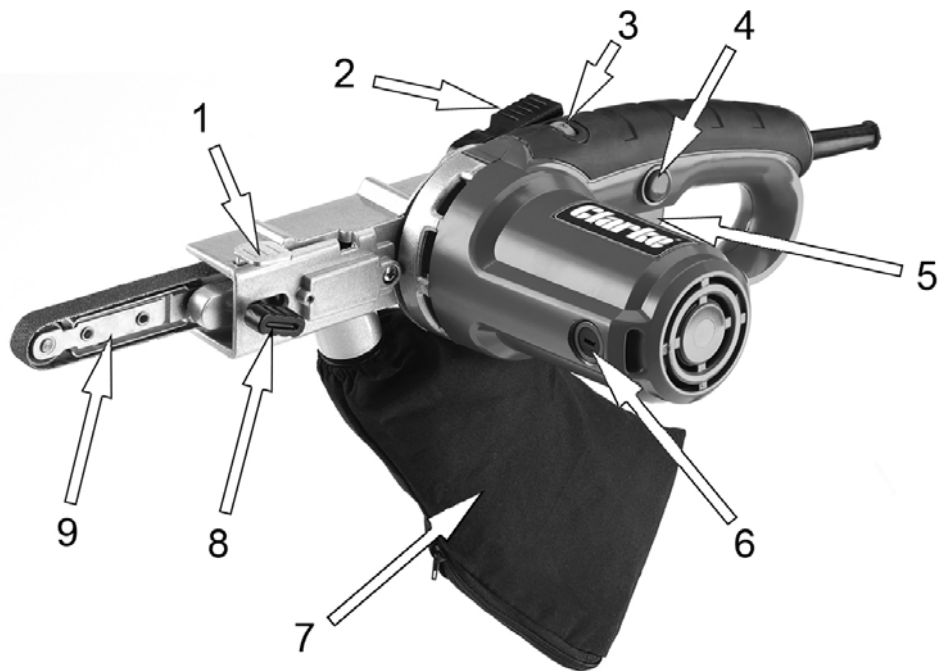


**This symbol indicates that this is a Class II product, and does not require an earth connection.**

---

## PART IDENTIFICATION.

---



1	Belt Tensioning Lever	6	Carbon Brush Cap
2	Arm Adjustment Lever	7	Dustbag
3	Variable Speed Control Knob	8	Belt Tracking Knob
4	Safety Lock Button	9	Arm
5	On/off Trigger Switch		

---

## CARTON CONTENTS

---

The following items should be supplied. If any parts are missing or damaged, please contact the Clarke dealer where you purchased the tool.

- 1 x Electric Power File
- 5 x 13mm x 457mm 120 Grit Sanding Belts.
- 1 x Dust Collection Bag
- 1 x Black Moulded Case

---

# ASSEMBLY

---

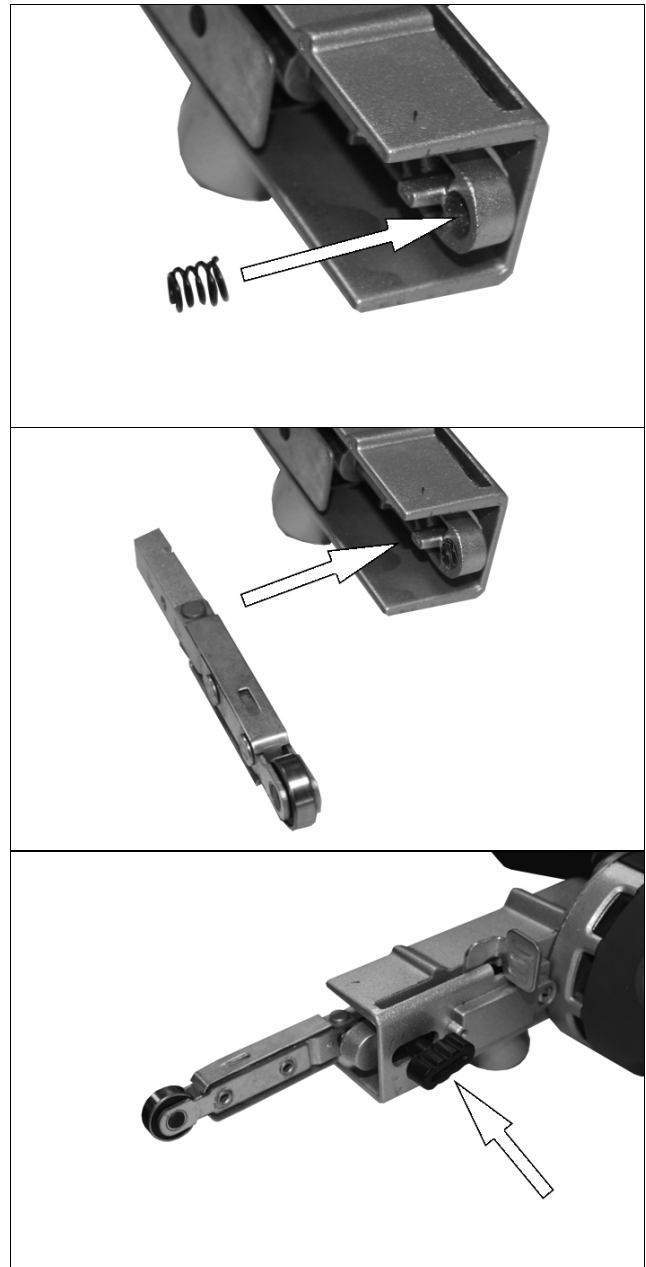


**WARNING: BEFORE ASSEMBLY, MAKE SURE THAT THE TOOL IS SWITCHED OFF AND UNPLUGGED.**

---

## FITTING THE SANDING ARM

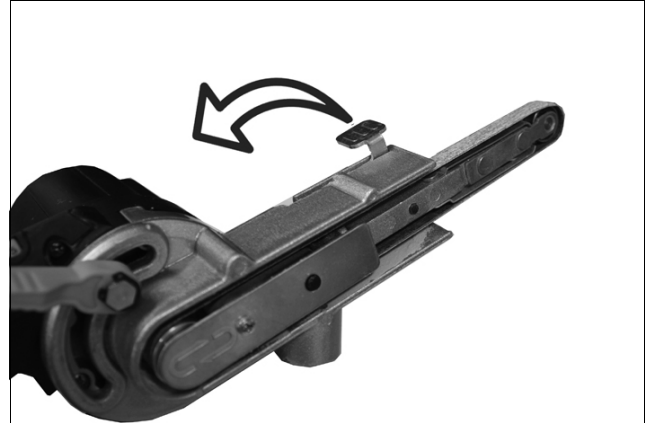
1. Insert the small spring into the recess as shown.
2. Slide the sanding arm over the raised 'pip' and hold it in place.
3. Pass the belt tracking knob through the casting into the sanding arm to lock the arm in position.



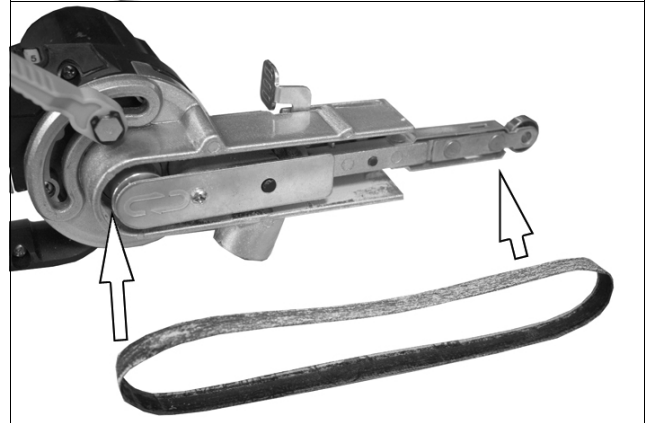


## FITTING AND REMOVING SANDING BELTS

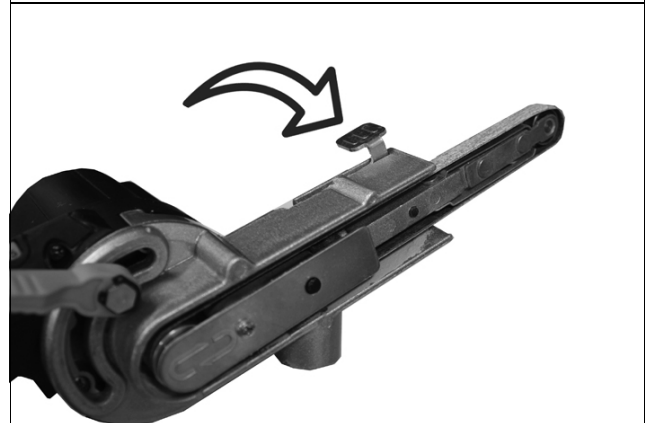
1. Move the belt tensioning lever to the front position.



2. Place the sanding belt over the front pulley and the rear pulley, sliding it through the slot in the housing.
  - Make sure that the arrows on the inside of the sanding belt face the same direction as the arrows on the housing.

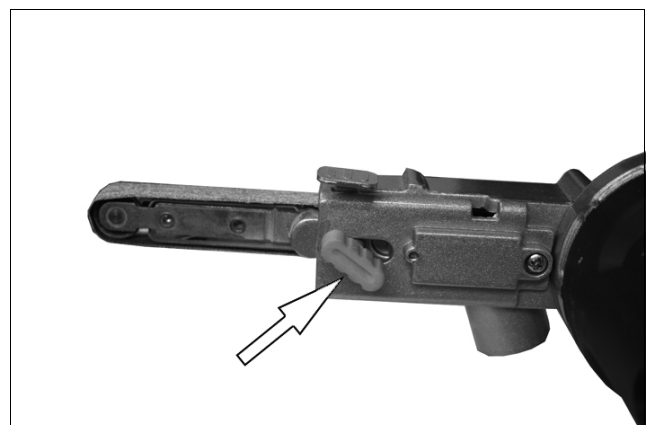


3. Move the belt tensioning lever to the rear position.
4. Adjust the belt tracking as described See page 9.



## ADJUSTING THE SANDING BELT TRACKING

1. Switch the tool on.
2. Turn the belt tracking knob as required until the sanding belt runs straight along the length of the arm.



## FITTING AND REMOVING THE DUST BAG



**WARNING: ALWAYS REMOVE THE DUSTBAG WHEN USING THE TOOL ON METAL WORKPIECES.**

### FITTING

1. Fit the dust bag over the dust extraction outlet.

### REMOVING / EMPTYING THE DUSTBAG

The dustbag should be emptied when full.

1. Pull the dustbag off of the tool.
2. Hold the dustbag over a bin and unzip the dustbag to empty the contents.
3. Zip up the dustbag and slide it back on to the tool, making sure that it is securely located.



## OPERATION

### INTENDED USE

Your power file has been designed for sanding wood, metal, plastics and painted surfaces.

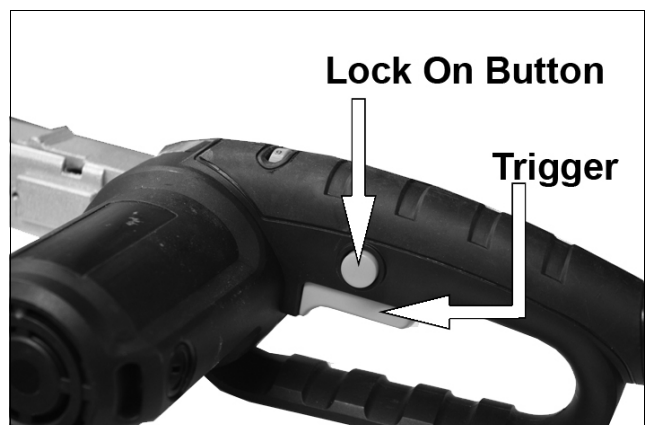
### SWITCHING ON AND OFF

To switch the tool on, press the on/off trigger switch.

To switch the tool off, release the on/off trigger switch.

#### FOR CONTINUOUS OPERATION:

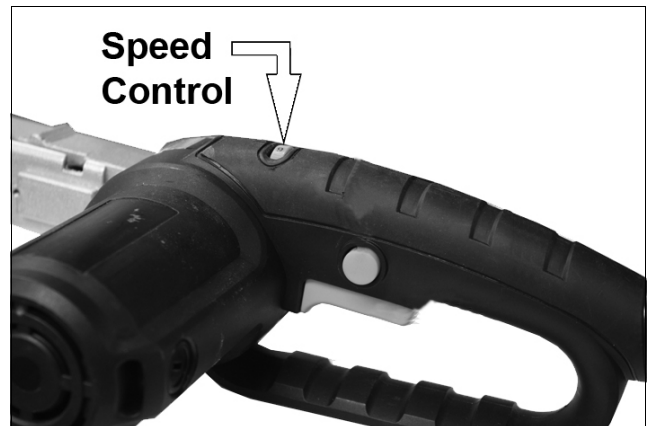
1. Press the on/off trigger switch.
2. Press the lock-on button.
3. Release the on/off trigger switch.
4. To switch the tool off when in continuous operation, press and release the on/off trigger switch.



## VARIABLE SPEED CONTROL

The variable speed control allows you to adapt the speed of the tool to the workpiece material.

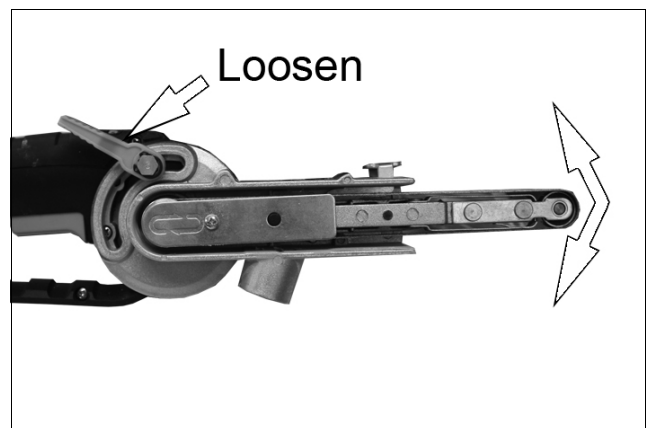
1. Set the variable speed control knob to the required setting.
  - Use a low speed setting when using a fine grit, when working with plastics or ceramics and when removing painted or varnished surfaces.
  - Use a high speed setting when using a coarse grit and when removing a lot of material.



## ADJUSTING THE ANGLE

To adjust the angle of the arm.

1. Loosen the arm adjustment lever.
2. Adjust the arm to one of the 14 positions from +30° to -90°.
3. Move the arm adjustment lever to the lock position.



## HINTS FOR OPTIMUM USE

- Always hold the tool securely.
- Do not exert too much pressure on the tool.
- Regularly check the condition of the sanding belt and replace when necessary.
- On very uneven surfaces, or when removing layers of paint, start with a coarse grit. On other surfaces, start with a medium grit. In both cases, gradually change to a fine grit for a smooth finish.

---

# MAINTENANCE

---



**WARNING: BEFORE PERFORMING ANY MAINTENANCE, SWITCH OFF AND UNPLUG THE TOOL.**

Your tool has been designed to operate over a long period of time with a minimum of maintenance. Continuous satisfactory operation depends upon proper tool care and regular cleaning.

Regularly clean the ventilation slots in your tool using a soft dry brush or dry cloth.

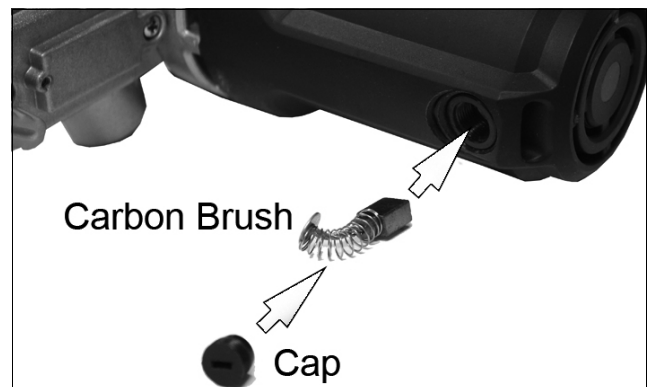
Regularly clean the motor housing using a clean damp cloth. Do not use any abrasive or solvent-based cleaner.

## CHANGING THE CARBON BRUSHES

Occasionally remove and inspect the motor brushes and replace if necessary.

When removing brushes, note which way round they are. The brushes must be returned exactly the same way.

Never allow the brushes to wear more than two thirds of their original length, (new brushes are approximately 13 mm long), fit new brushes when or before they are worn down to 5 mm.



## VIBRATION

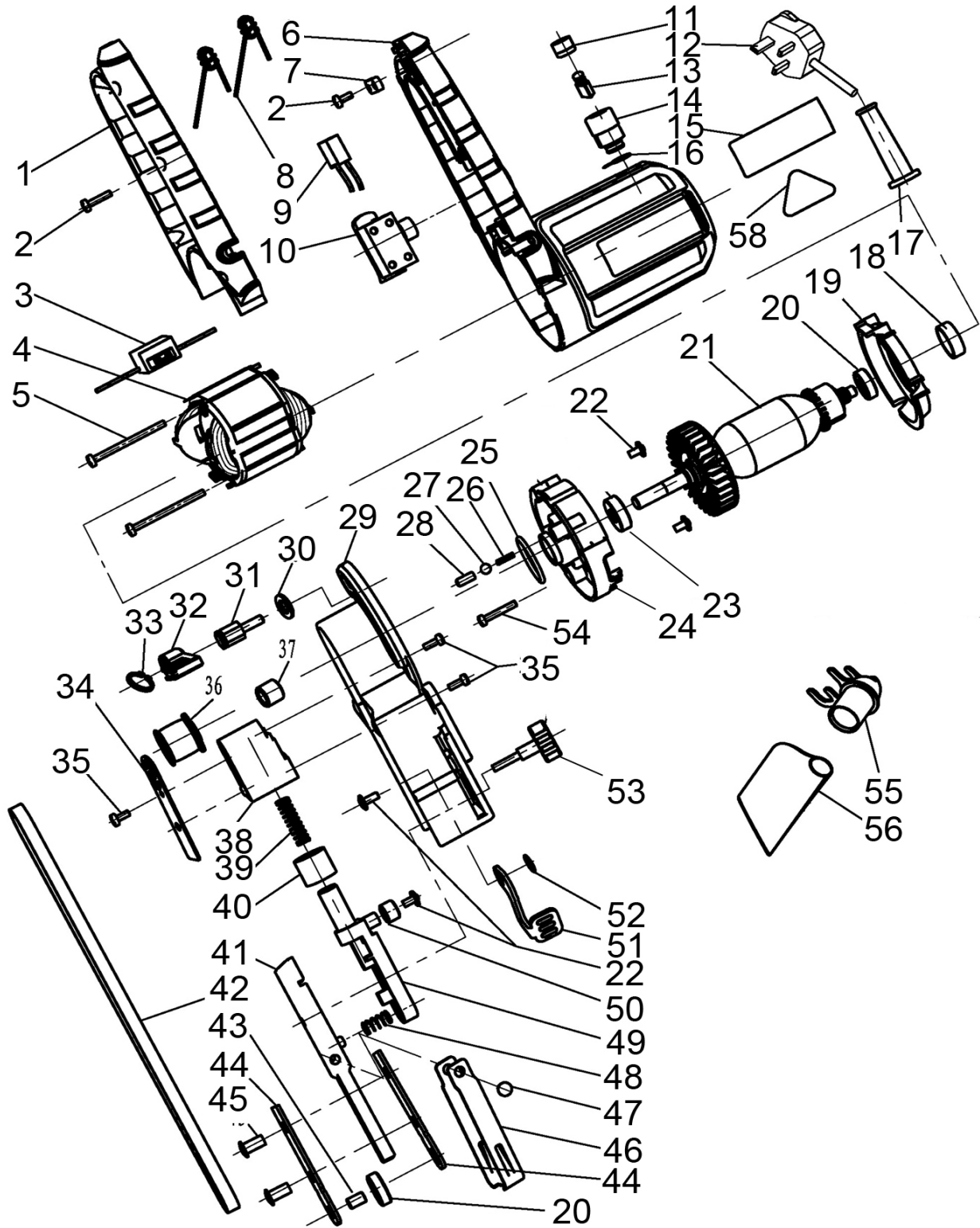
The declared vibration emission values stated in the specifications have been measured in accordance with a standard test method provided by EN 60745 and may be used for comparing one tool with another. The declared vibration emission value may also be used in a preliminary assessment of exposure.



**WARNING: THE VIBRATION EMISSION VALUE DURING ACTUAL USE OF THE POWER TOOL CAN DIFFER FROM THE DECLARED VALUE DEPENDING ON THE WAYS IN WHICH THE TOOL IS USED. THE VIBRATION LEVEL MAY INCREASE ABOVE THE LEVEL STATED.**

---

# PARTS DIAGRAM



## PARTS LIST

1	Handle
2	Screw
3	Speed Controller
4	Stator
5	Screw
6	Housing
7	Cable Clamp
8	Inductance
9	Capacitor
10	Switch
11	Carbon Brush Cover
12	Cable
13	Carbon Brush
14	Carbon Brush Holder
15	Brand Label
16	Spring
17	Cable Sleeve
18	Bearing Spacer 607
19	Wind Fence
20	Bearing 626-2rs
21	Rotor Assembly
22	Screw
23	Bearing 608-2rz
24	Centre Housing
25	Seal Ring
26	Small Spring
27	Steel Ball
28	Small Steel Sleeve
29	Support Frame
30	Flat Washer
31	Hexagonal Bolt
32	Locking Lever

33	Circlip
34	Cover
35	Screw
36	Driving Roller
37	Bearing
38	Adjustor Body
39	Compression Spring
40	Dust Proof Ring
41	Support Bar
42	Sanding Belt 13 X 457
43	Pin
44	Side Plate
45	Rivet
46	Buffer
47	Rivet
48	Compression Spring
49	Bracket Base
50	Bearing
51	Tension Lever
52	Wave Shape Washer
53	Tracking Adjuster Knob
54	Screw
55	Dust Exit
56	Dust Bag

Part nos for this product carry the prefix HF (CPF13) when ordering replacement parts.

**Replacement belts are available in packs of 5 as:**

Fine - 6502360

Medium - 6502365

Coarse - 6502370

# DECLARATION OF CONFORMITY



Hemmill Street, Epping, Essex, CM16 4LG

## DECLARATION OF CONFORMITY

This is an important document and should be retained.

We hereby declare that this product(s) complies with the following legislation:

- The Electromagnetic Compatibility Regulations 2016*
- The Supply of Machinery (Safety) Regulations 2008*
- The Restriction of the Use of Certain Hazardous Substances in Electrical and Electronic Equipment Regulations 2012*

The following standards have been applied to the product(s):

- BS EN 55014-1:2017+A11:2020, BS EN 55014-2:2015, BS EN IEC 61000-3-2:2019, BS EN 61000-3-3:2013+A1:2019, BS EN 62841-1:2015, BS EN 62841-2-4:2014, IEC 62321-3-1:2013, IEC 62321-4:2013+AMD1:2017 CSV, IEC 62321-5:2013, IEC 62321-6:2015, IEC 62321-7-1:2015, IEC 62321-7-2:2017, IEC 62321-8:2017, ISO 17075:2007, ISO 17075:2017*

The technical documentation required to demonstrate that the product(s) meet(s) the requirement(s) of the aforementioned legislation has been compiled and is available for inspection by the relevant enforcement authorities.

The UKCA mark was first applied in: 2022

Product Description: Electric File  
Model Number(s): CPF-13  
Serial/Batch Number: Refer to product/packaging label  
Date of Issue: 27/03/2023

Signed:

J.A. Clarke  
Director

CPF-13 UKCA Doc 032723

Page 1 of 1



Fitzwilliam Hall, Fitzwilliam Place, Dublin 2

## DECLARATION OF CONFORMITY

This is an important document and should be retained.

We hereby declare that this product(s) complies with the following legislation:

- 2014/30/EU Electromagnetic Compatibility Directive*
- 2006/42/EC Machinery Directive*
- 2011/65/EU Restriction of Hazardous Substances (RoHS) Directive*

The following standards have been applied to the product(s):

- EN 55014-1:2017+A11:2020, EN 55014-2:2015, EN IEC 61000-3-2:2019, EN 61000-3-3:2013+A1:2019, EN 62841-1:2015, EN 62841-2-4:2014, IEC 62321-3-1:2013, IEC 62321-4:2013+AMD1:2017 CSV, IEC 62321-5:2013, IEC 62321-6:2015, IEC 62321-7-1:2015, IEC 62321-7-2:2017, IEC 62321-8:2017, ISO 17075:2007, ISO 17075:2017*

The technical documentation required to demonstrate that the product(s) meet(s) the requirement(s) of the aforementioned legislation has been compiled and is available for inspection by the relevant enforcement authorities.

The CE mark was first applied in: 2009

Product Description: Electric File  
Model Number(s): CPF-13  
Serial/Batch Number: Refer to product/packaging label  
Date of Issue: 27/03/2023

Signed:

J.A. Clarke  
Director

CPF-13 CE Clarke Doc 032723

Page 1 of 1

# A SELECTION FROM THE VAST RANGE OF

# Clarke®

## QUALITY PRODUCTS



### **AIR COMPRESSORS**

From DIY to industrial, Plus air tools, spray guns and accessories.

### **GENERATORS**

Prime duty or emergency standby for business, home and leisure.

### **POWER WASHERS**

Hot and cold, electric and engine driven - we have what you need

### **WELDERS**

Mig, Arc, Tig and Spot. From DIY to auto/industrial.

### **METALWORKING**

Drills, grinders and saws for DIY and professional use.

### **WOODWORKING**

Saws, sanders, lathes, mortisers and dust extraction.

### **HYDRAULICS**

Cranes, body repair kits, transmission jacks for all types of workshop use.

### **WATER PUMPS**

Submersible, electric and engine driven for DIY, agriculture and industry.

### **POWERTOOLS**

Angle grinders, cordless drill sets, saws and sanders.

### **STARTERS/CHARGERS**

All sizes for car and commercial use.

## **PARTS & SERVICE: 0208 988 7400**

**Parts Enquiries**  
[Parts@clarkeinternational.com](mailto:Parts@clarkeinternational.com)

**Servicing & Technical Enquiries**  
[Service@clarkeinternational.com](mailto:Service@clarkeinternational.com)

SALES: UK 01992 565333 or Export 00 44 (0)1992 565335

**Clarke** INTERNATIONAL Hemnall Street, Epping, Essex CM16 4LG  
[www.clarkeinternational.com](http://www.clarkeinternational.com)